



Company : Woodside Energy Limited

Well : Somerset-1

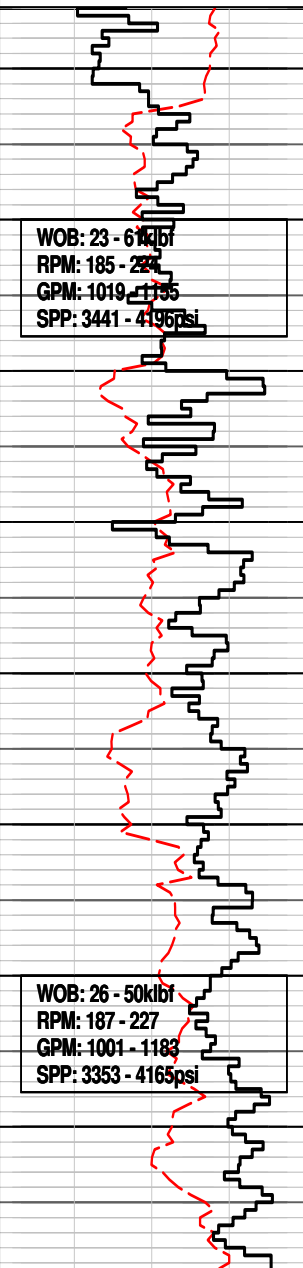
Interval : 1186.00 - 2914.55 meters

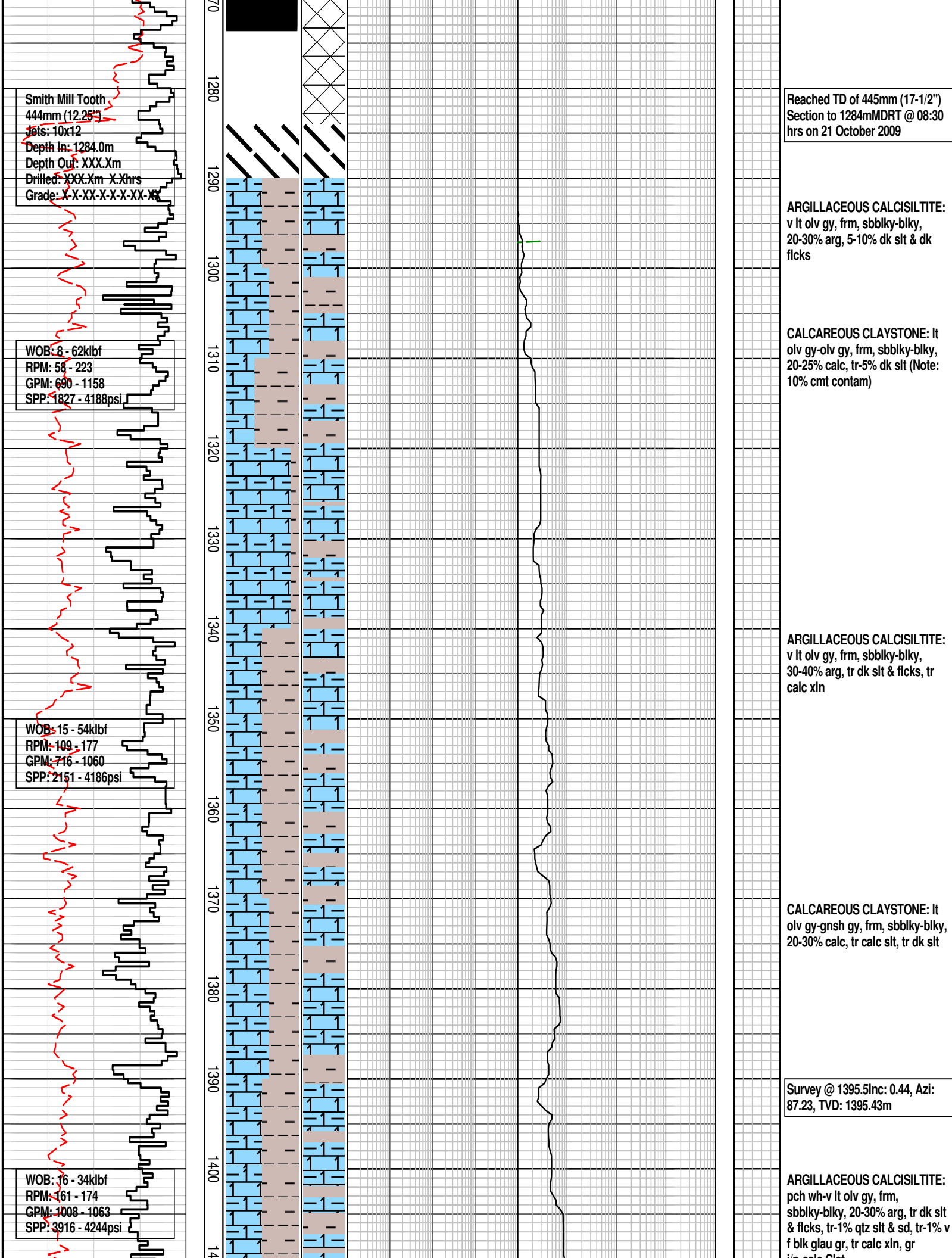
Created : 28/Oct/2009 6:10:33 AM

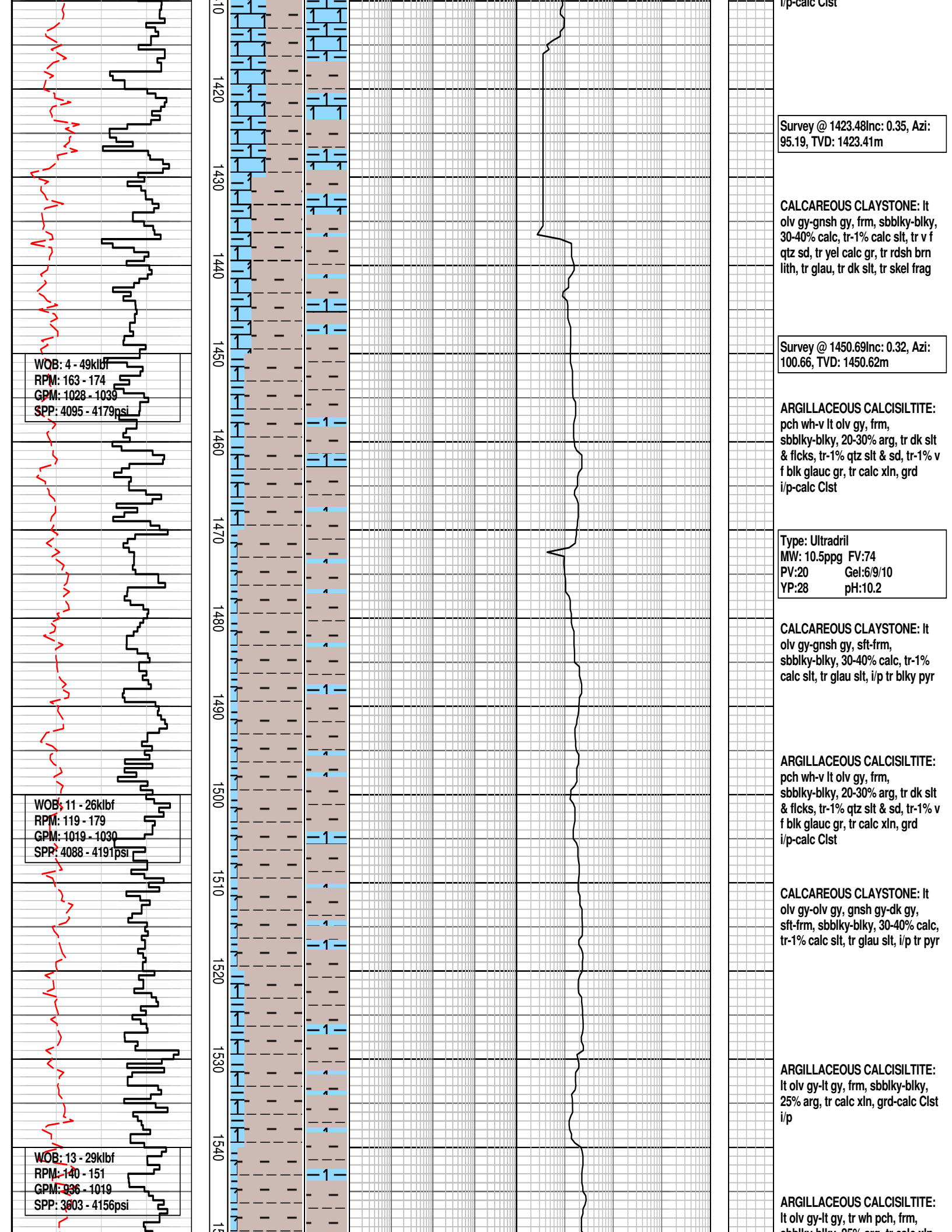


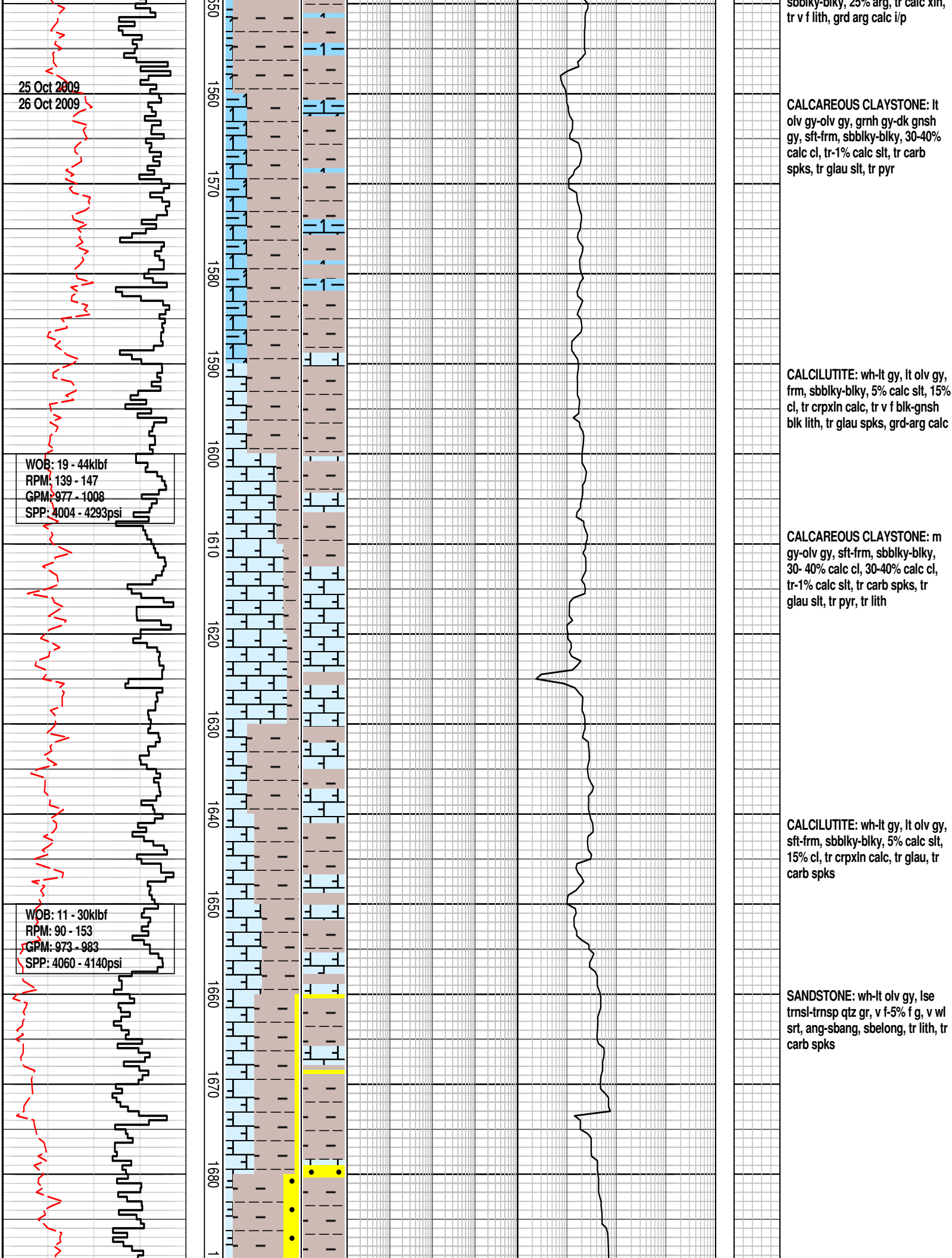
INTEQ

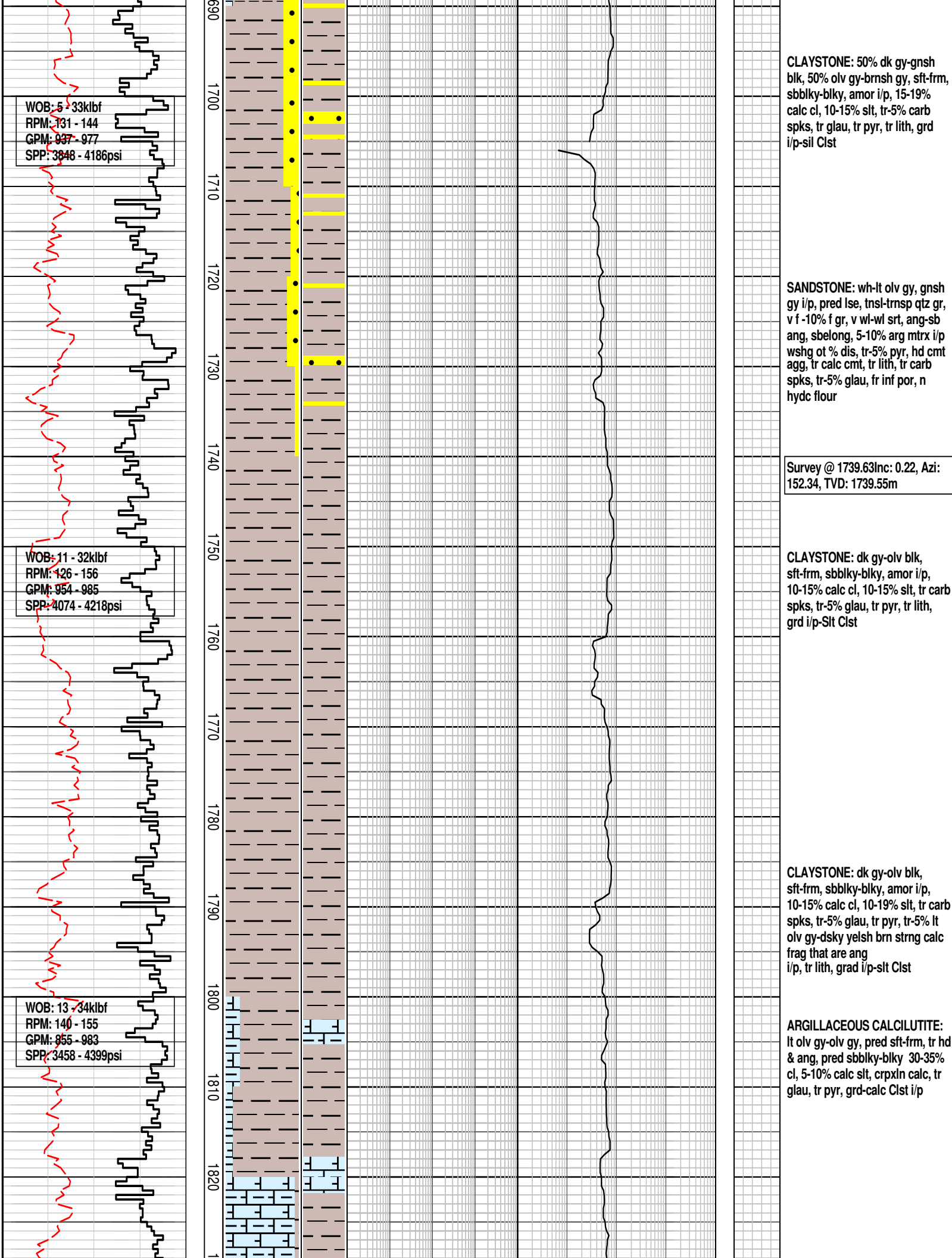
FORMATION EVALUATION LOG

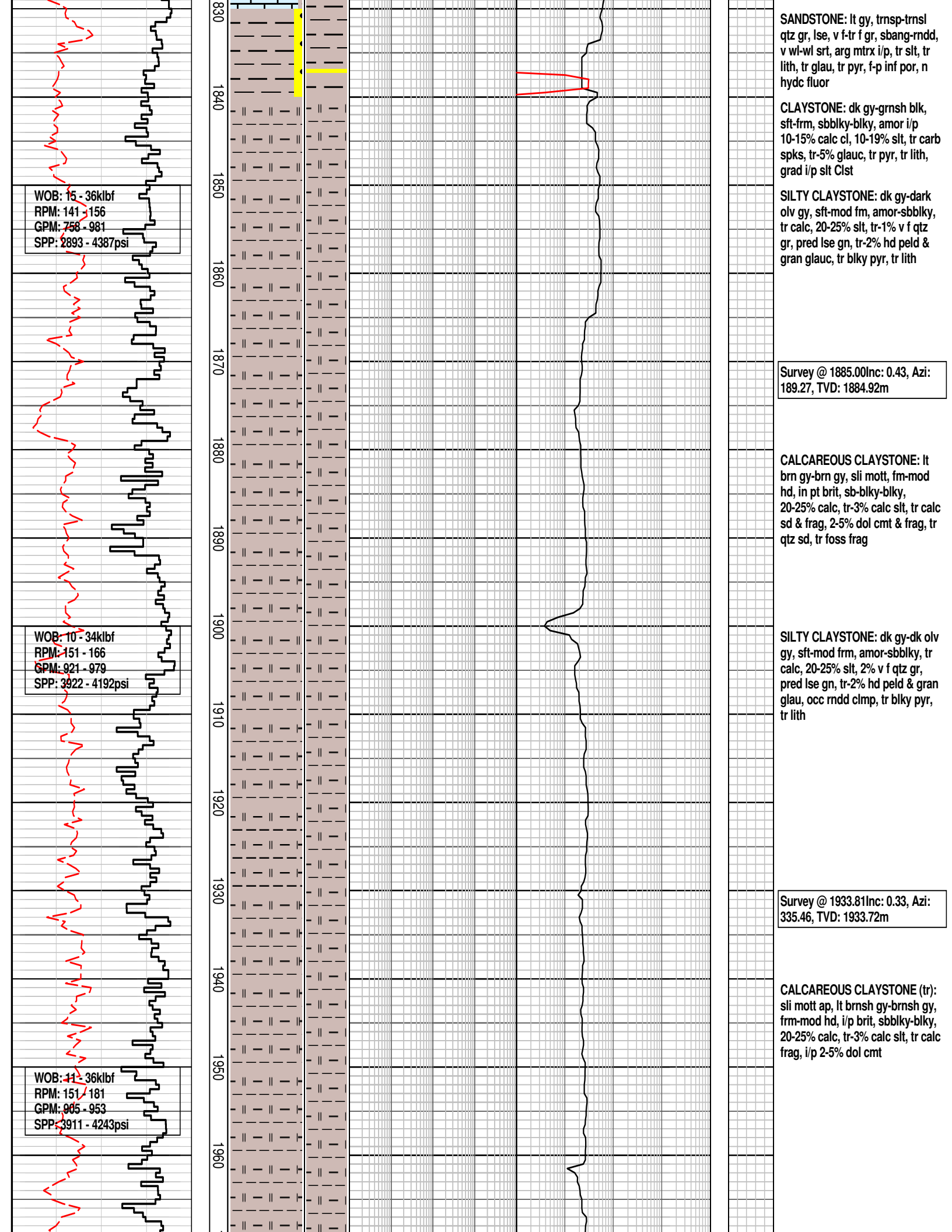
WOB (klbf)		ROP (m/hr)		MD meters 1:500	CORE	LITHOLOGY %	INTERPRETED LITHOLOGY	TOTAL GAS & RESISTIVITY	CHROMATOGRAPH		CALC	REMARKS	
20 40 60 80		200 150 100 50							Methane (%)				
									0.01 0.1 1 10		OIL FLUORESCENCE		
									Ethane (%)				
									0.01 0.1 1 10		P F G		
									Propane (%)				
									0.01 0.1 1 10				
									iso-Butane (%)				
									0.01 0.1 1 10				
									n-Butane (%)				
									0.01 0.1 1 10				
									iso-Pentane (%)				
									0.01 0.1 1 10				
									n-Pentane (%)				
									0.01 0.1 1 10				
		<div>WOB: 23 - 61klbf RPM: 185 - 227 GPM: 1019 - 1155 SPP: 3441 - 4196psi</div>		1190									Survey @ 1203.66Inc: 0.95, Azi: 60.78, TVD: 1203.60m
				1200									
				1210								Drill with seawater and Hi-vis PHG & Gum sweeps Returns to Seabed	
				1220									
				1230									
				1240									
				1250								Survey @ 1251.88Inc: 0.94, Azi: 59.95, TVD: 1251.82m	
				1260									
				1270								Survey @ 1254.369Inc: 0.22, Azi: 29.97, TVD: 1254.29m	
				1280									
				1290									
				1300									
				1310									
				1320									
				1330									
				1340									
				1350									
				1360									
				1370									
				1380									
				1390									
				1400									
				1410									
				1420									
				1430									
				1440									
				1450									
				1460									
				1470									
				1480									
				1490									
				1500									
				1510									
				1520									
				1530									
				1540									
				1550									
				1560									
				1570									
				1580									
				1590									
				1600									
				1610									
				1620									
				1630									
				1640									
				1650									
				1660									
				1670									
				1680									
				1690									
				1700									
				1710									
				1720									
				1730									
				1740									
				1750									
				1760									
				1770									
				1780									
				1790									
				1800									
				1810									
				1820									
				1830									
				1840									
				1850									
				1860									
				1870									
				1880									
				1890									
				1900									
				1910									
				1920									
				1930									
				1940									
				1950									
				1960									
				1970									
				1980									
				1990									
				2000									
				2010									
				2020									
				2030									
				2040									
				2050									
				2060									
				2070									
				2080									
				2090									
				2100									

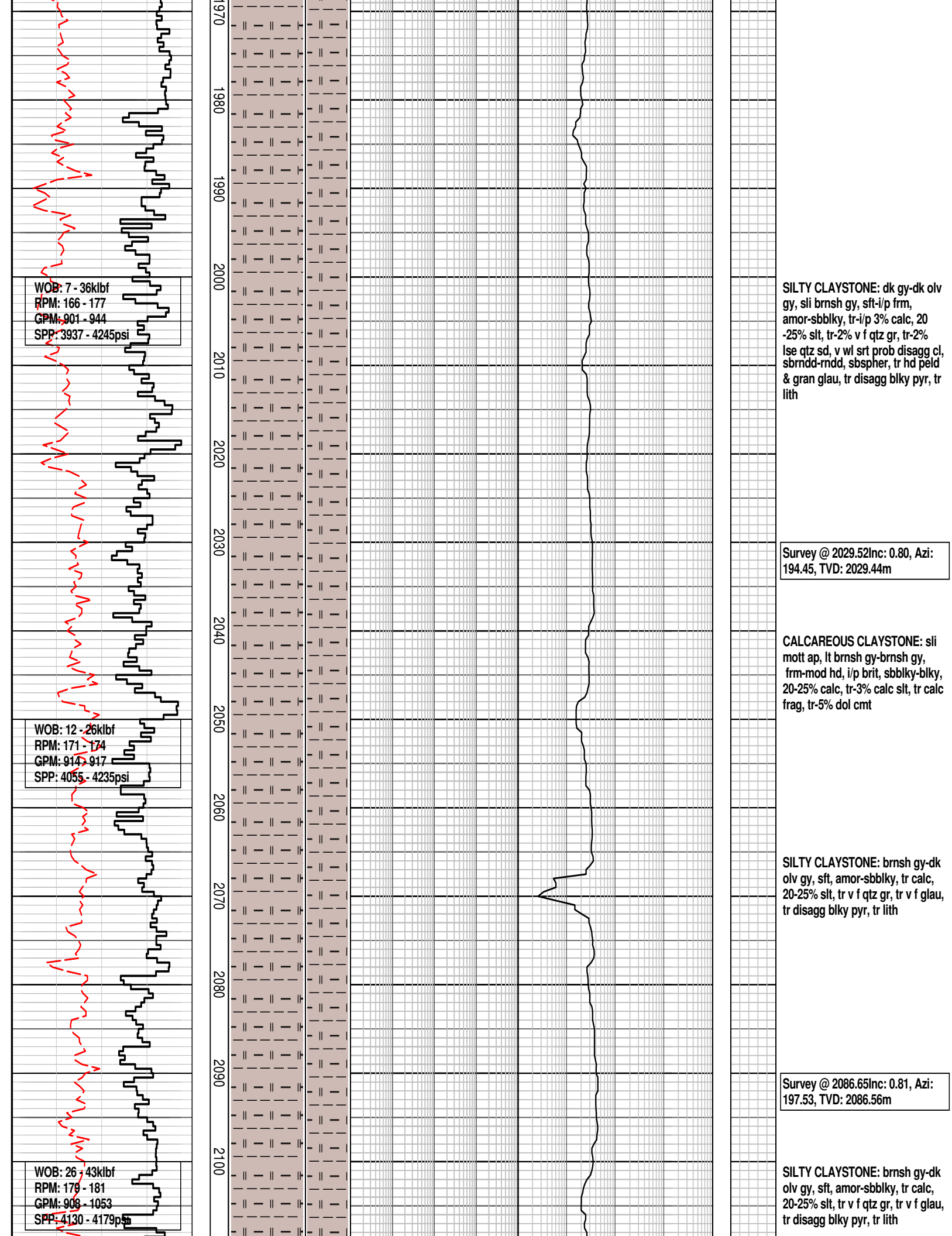


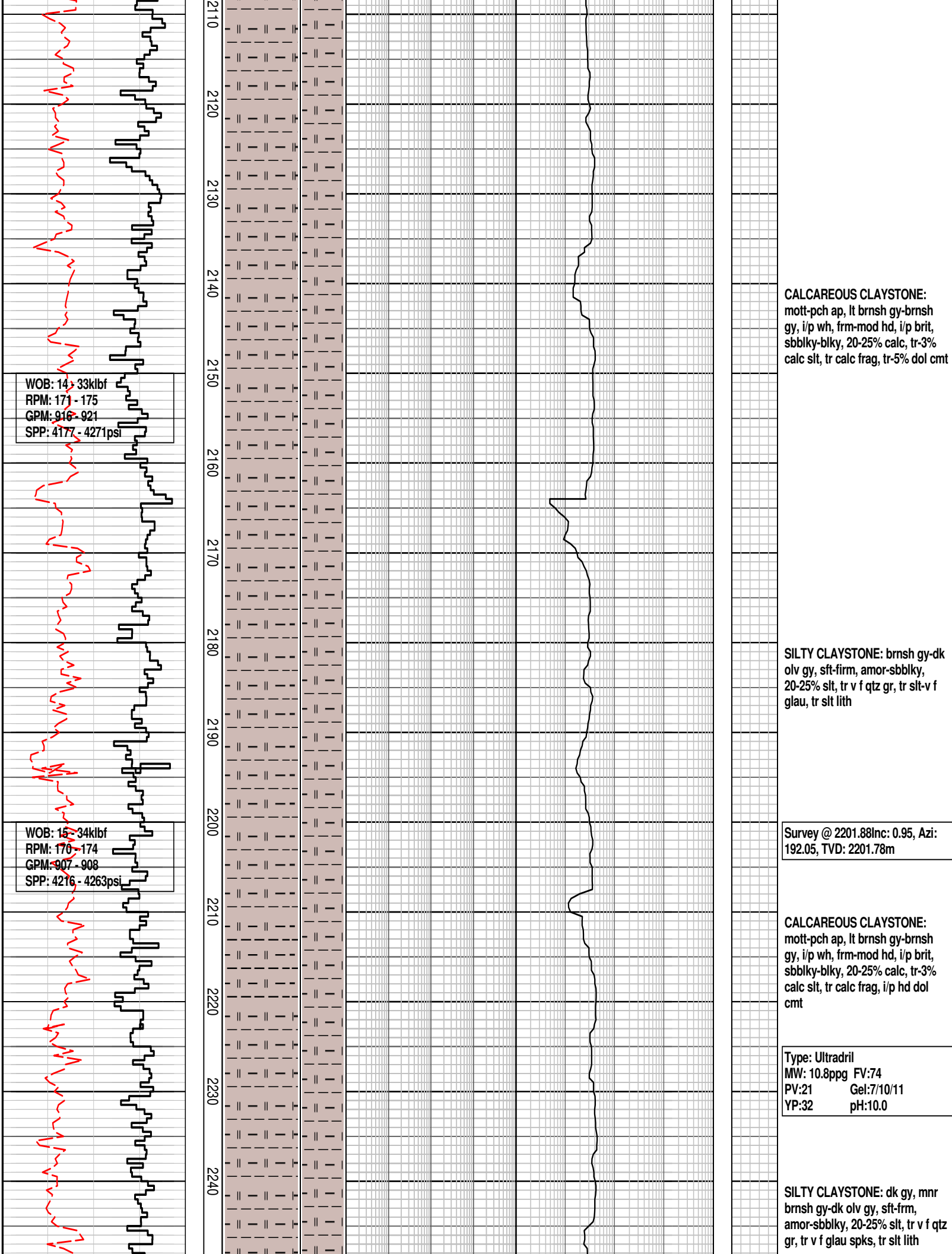


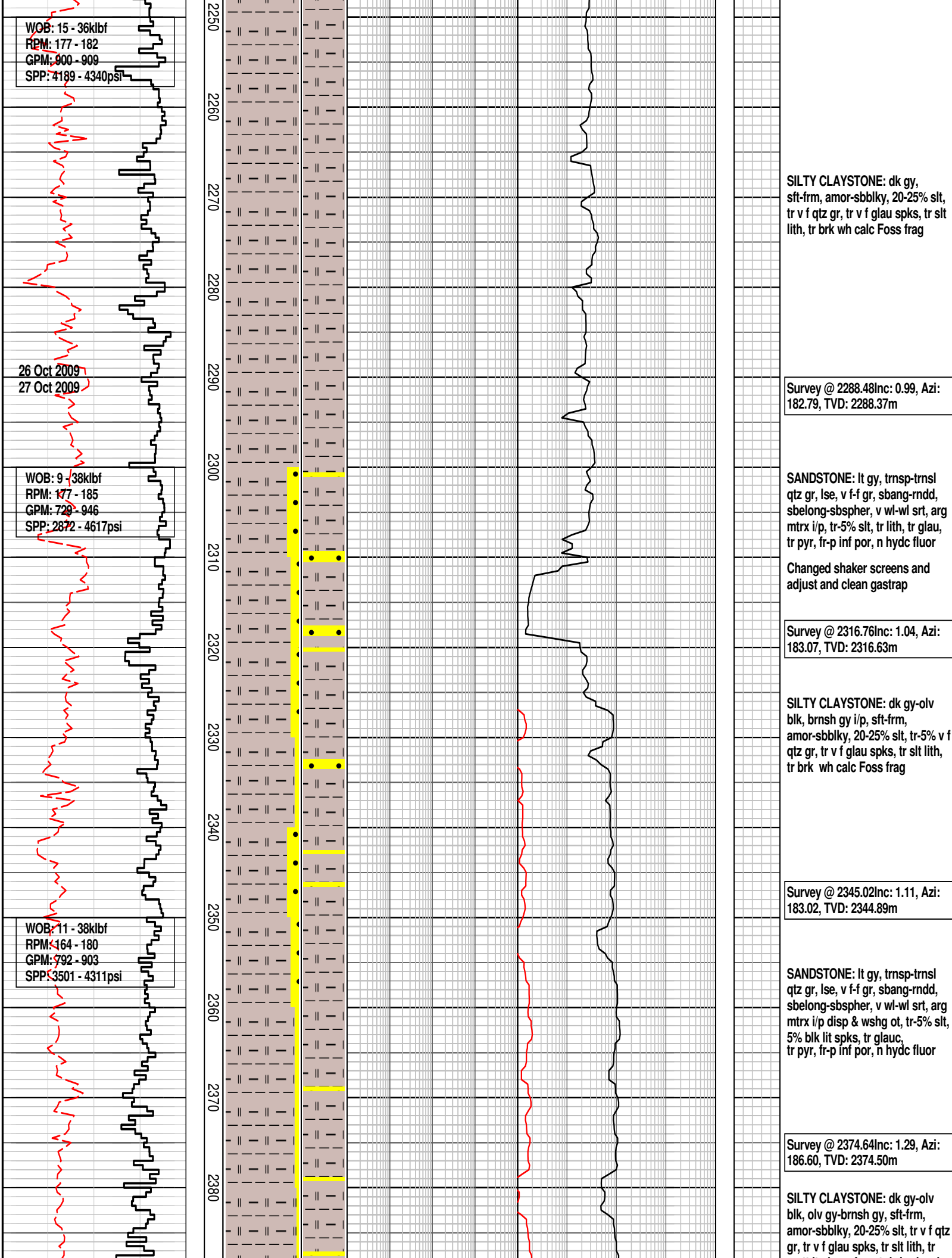












SILTY CLAYSTONE: dk gy, sft frm, amor-sbblky, 20-25% slt, tr v f qtz gr, tr v f glau spks, tr slt lith, tr brk wh calc Foss frag

Survey @ 2288.48 Inc: 0.99, Azi: 182.79, TVD: 2288.37m

SANDSTONE: lt gy, trnspr-trnsl qtz gr, lse, v f-f gr, sbang-rnnd, sbelong-sbspher, v wl-wl srt, arg mtrx i/p, tr-5% slt, tr lith, tr glau, tr pyr, fr-p inf por, n hydc fluor

Changed shaker screens and adjust and clean gastrap

Survey @ 2316.76 Inc: 1.04, Azi: 183.07, TVD: 2316.63m

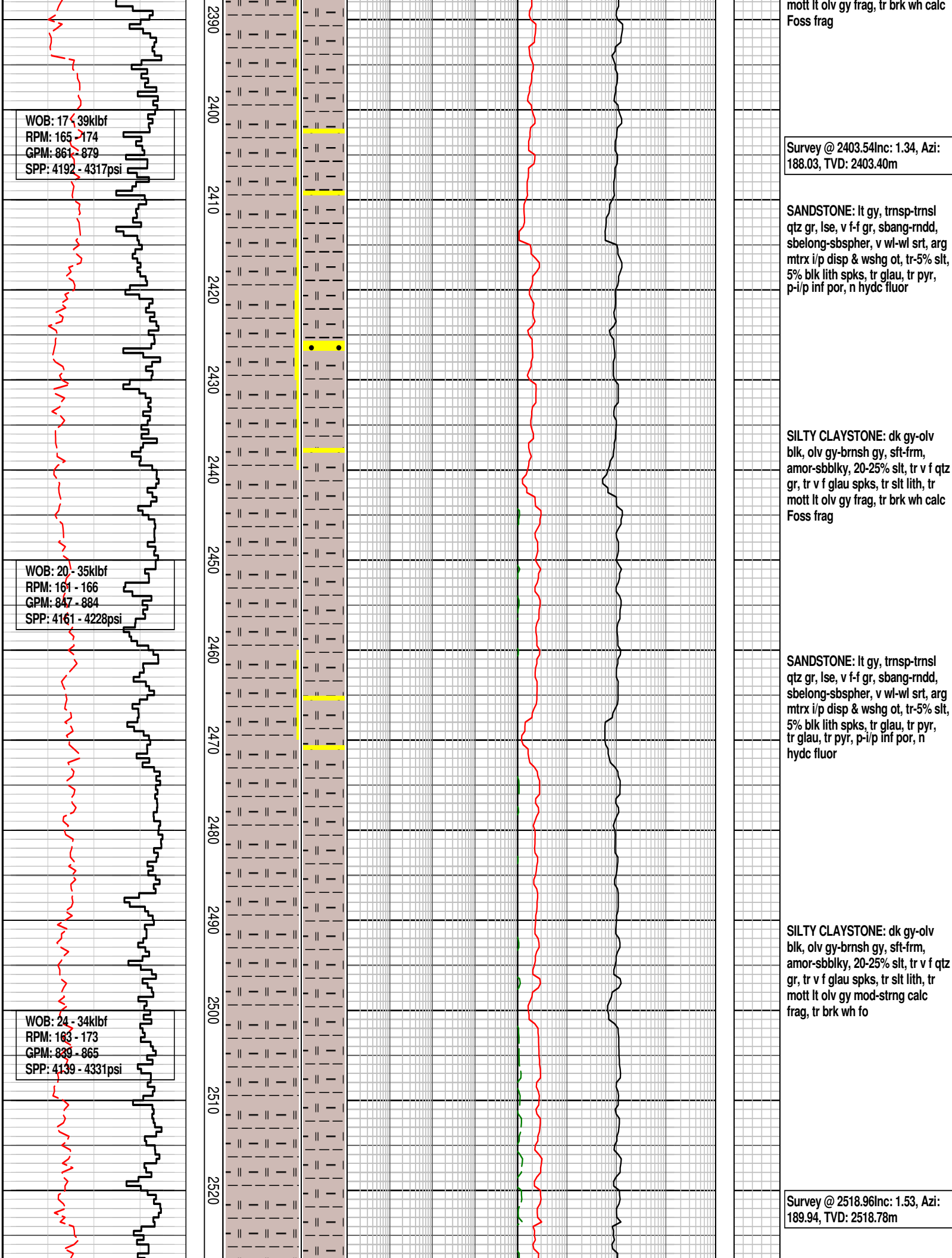
SILTY CLAYSTONE: dk gy-olv blk, brnsh gy i/p, sft frm, amor-sbblky, 20-25% slt, tr-5% v f qtz gr, tr v f glau spks, tr slt lith, tr brk wh calc Foss frag

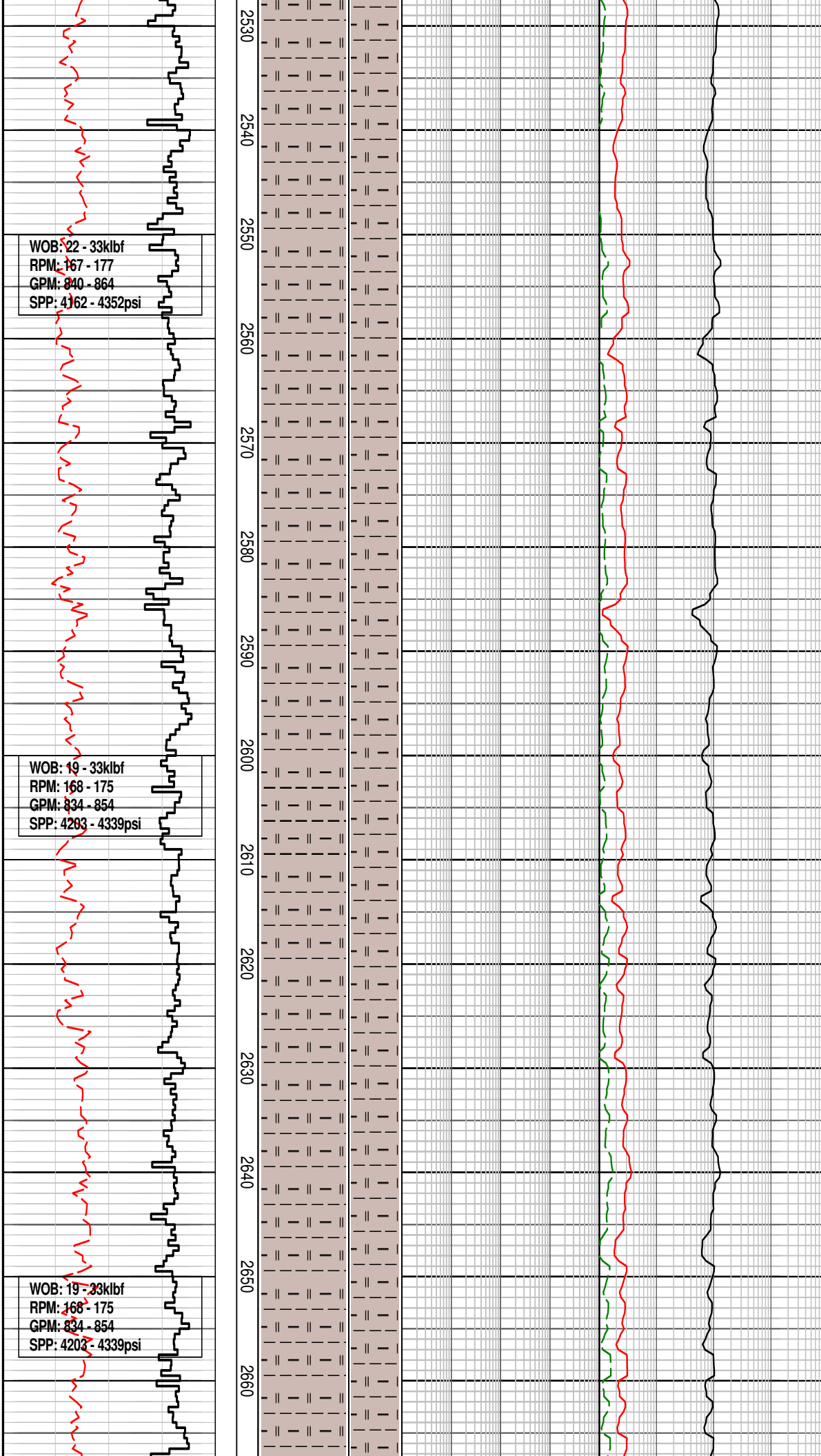
Survey @ 2345.02 Inc: 1.11, Azi: 183.02, TVD: 2344.89m

SANDSTONE: lt gy, trnspr-trnsl qtz gr, lse, v f-f gr, sbang-rnnd, sbelong-sbspher, v wl-wl srt, arg mtrx i/p disp & wshg ot, tr-5% slt, 5% blk lit spks, tr glauc, tr pyr, fr-p inf por, n hydc fluor

Survey @ 2374.64 Inc: 1.29, Azi: 186.60, TVD: 2374.50m

SILTY CLAYSTONE: dk gy-olv blk, olv gy-brnsh gy, sft frm, amor-sbblky, 20-25% slt, tr v f qtz gr, tr v f glau spks, tr slt lith, tr





SILTY CLAYSTONE: dk gy-olv blk, olv gy-brnsh gy, sft-frm, amor-sbblky, 20-25% slt, tr v f qtz gr, tr v f glau spks, tr lith, tr mott lt olv gy mod-strng calc frag, tr brk wh Foss frag

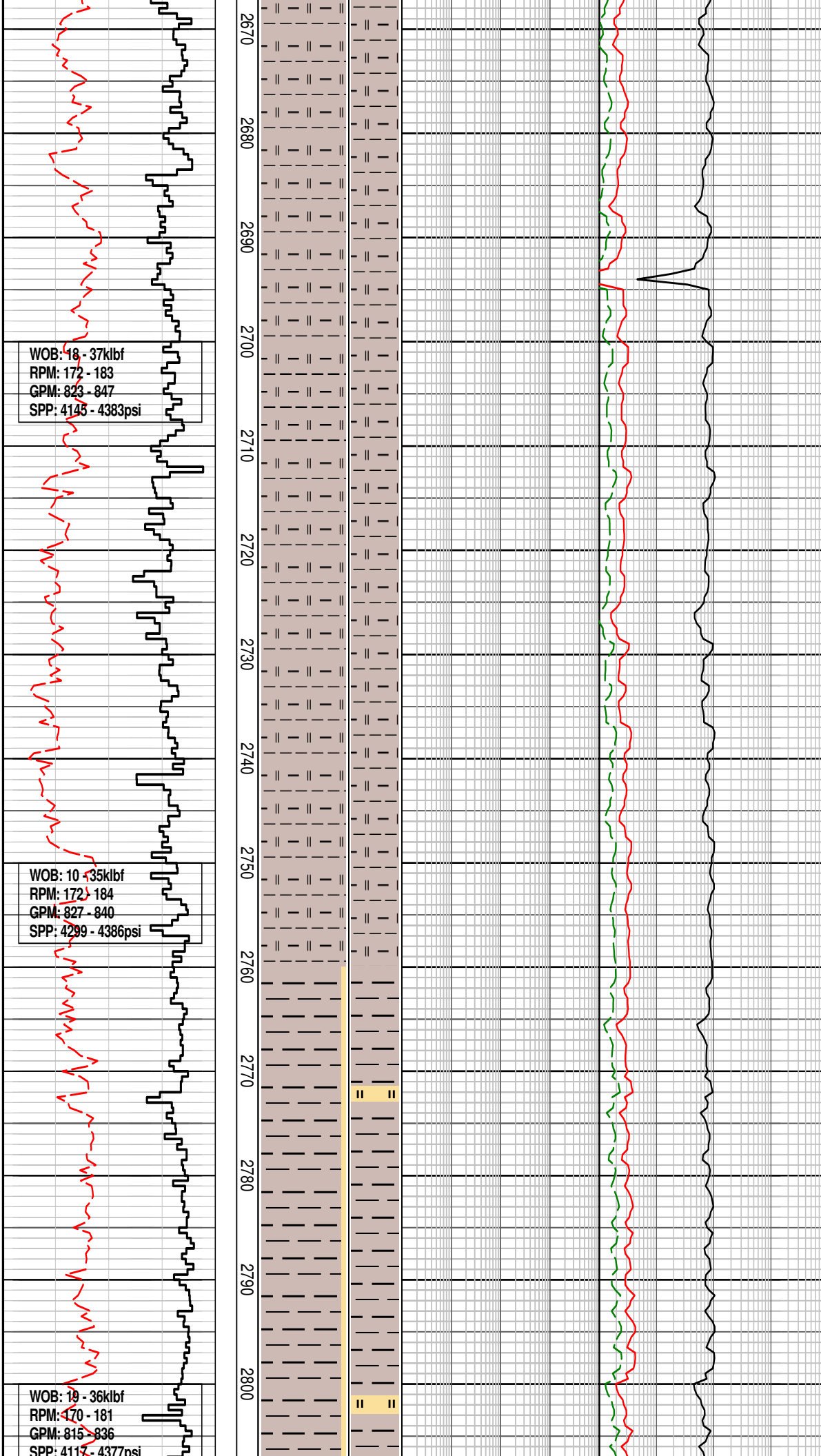
Survey @ 2546.16Inc: 1.43, Azi: 187.93, TVD: 2545.97m

SILTY CLAYSTONE: dk gy-gysh blk, olv gy-brnsh gy, sft-frm, amor-sbblky, 20-25% slt, tr v f qtz gr, tr v f glau spks, tr lith, tr mott lt olv gy mod-strng calc frag, tr brk wh Foss frag

Survey @ 2604.71Inc: 1.39, Azi: 183.90, TVD: 2604.51m

SILTY CLAYSTONE: olv gy-brnsh gy, sft, amor-sbblky, 20% slt, tr-2% mott lt olv gy mod-strng calc clst, tr v f qtz gr, tr slt-v f glau gr, tr dk spks

Survey @ 2661.70Inc: 1.42, Azi: 181.44, TVD: 2661.48m



WOB: 18 - 37klbf
RPM: 172 - 183
GPM: 823 - 847
SPP: 4145 - 4383psi

WOB: 10 - 35klbf
RPM: 172 - 184
GPM: 827 - 840
SPP: 4299 - 4386psi

WOB: 19 - 36klbf
RPM: 170 - 181
GPM: 815 - 836
SPP: 4117 - 4377psi

SILTY CLAYSTONE: olv gy-brnsh
gy, sft, amor-sbblky, 20% slit,
tr-2% mott lt olv gy mod-strng
calc clst, tr v f qtz gr, tr slit-v f
glau gr, tr dk spks

Flush gas line and cleaned gas
trap and header box on shaker

Started dopping mud with
calcium carbonate

Survey @ 2719.22Inc: 1.29, Azi:
178.53, TVD: 2718.98m

Survey @ 2748.22Inc: 1.23, Azi:
176.46, TVD: 2747.98m

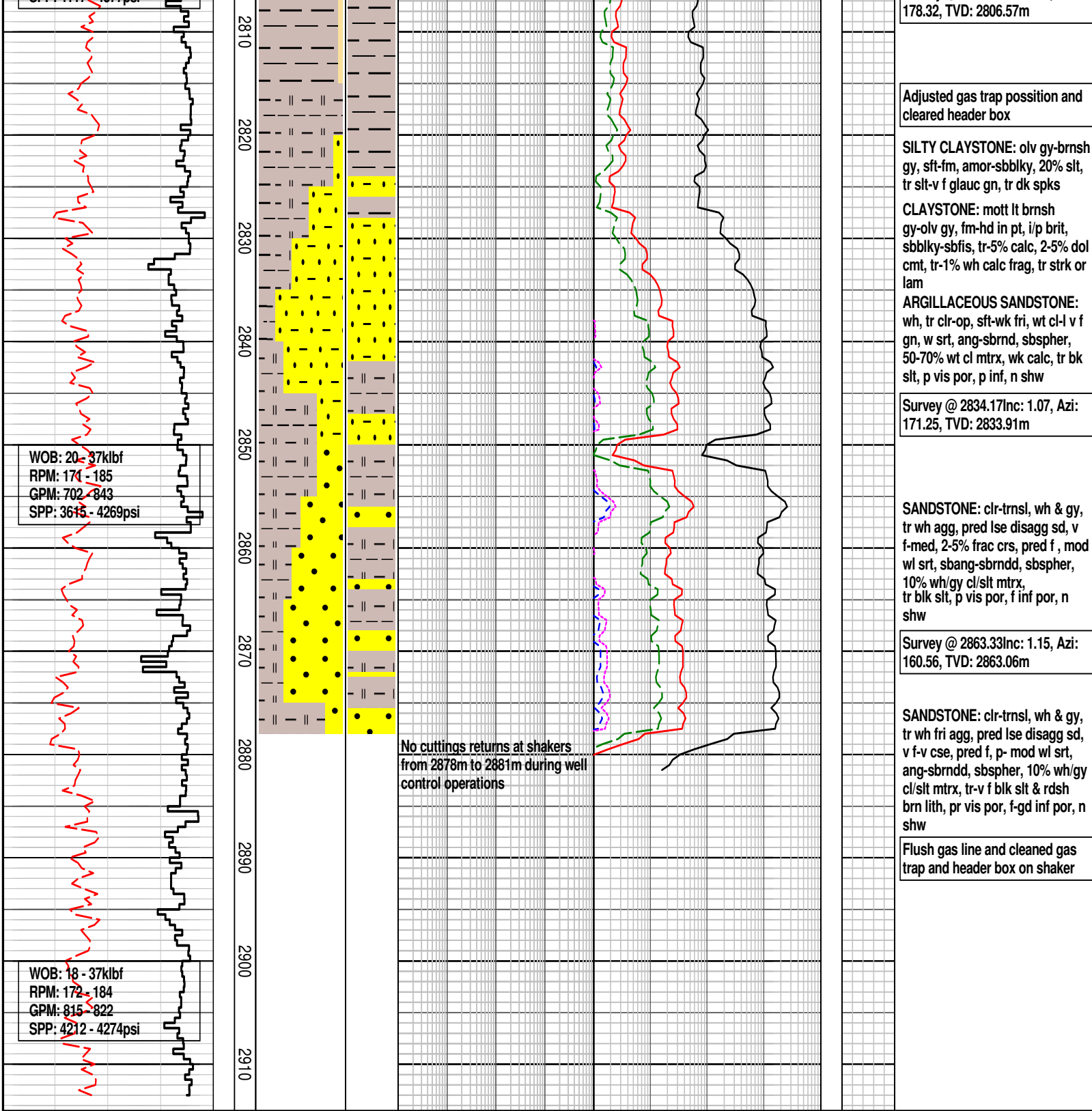
SILTY CLAYSTONE: olv gy-brnsh
gy, sft-fm, amor-sbblky, 20% slit,
tr-2% mott lt olv gy & mod-strng
calc clst, tr slit-v f glau gn, tr dk
spks

CLAYSTONE: mott lt brnsh
gy-olv gy, fm-hd i/p, i/p brit,
sbblky-sbfis, 2-5% calc, 2-5% dol
cmt, tr wh calc frag, tr strk or lam

Survey @ 2776.91Inc: 1.15, Azi:
171.57, TVD: 2776.77m

Started dopping mud with
calcium carbonate

Survey @ 2806.83Inc: 1.07, Azi:



FORMATION EVALUATION LOG								
WOB (klbf) <div><div></div><div>20406080</div></div> ROP (m/hr) <div><div></div><div>20015010050</div></div>		MD meters 1:500 CORE	LITHOLOGY %	INTERPRETED LITHOLOGY	TOTAL GAS & RESISTIVITY	CHROMATOGRAPH Methane (%) <div><div></div><div>0.010.1110</div></div> Ethane (%) <div><div></div><div>0.010.1110</div></div> Propane (%) <div><div></div><div>0.010.1110</div></div> iso-Butane (%) <div><div></div><div>0.010.1110</div></div> n-Butane (%) <div><div></div><div>0.010.1110</div></div>	CALC	REMARKS
					OIL FLUORESCENCE P F G			

[illegible]